



**LANGVER**

**RATCHET TENSIONERS**  
PRODUCT RANGE

# ABOUT US

---

Established in the 1970s, Langver Engineering is a global company with its roots firmly in the North of England. Operating from a functional facility in Thirsk, North Yorkshire, we design and manufacture ratchet tensioners for curtainsider trucks and trailers.

With a reputation second to none, we are industry renowned for delivering high quality parts and exceptional service, supplying to every major manufacturer in the UK as well as globally.

*Our effective quality management system ensures our customers receive consistent, good quality products and services.*



# OUR PRODUCTS

---

Our ratchet tensioners are precision engineered and robot welded using CNC machined and laser profiled components, that can be customised to adapt to specific requirements.

Every product is individually made and designed in-house to meet each client's exacting standards.

We pride ourselves on longevity, using the highest quality materials, to ensure every tensioner is hard wearing and long lasting. It is these processes and values which set us apart from our competitors.



# CONTENTS

---

Ratchet	Page	Ratchet	Page	Ratchet	Page
R10 / R10P	6-7	R45DN / R45DN SLOTTED	34-35	R58 / R60K	62-63
R11 / R11P	8-9	R45DW / R45K	36-37	R60K SLOTTED / R61	64-65
R12 / R16	10-11	R45KT / R45KW	38-39	R61i / R61iM	66-67
R17 / R17T	12-13	R45L / R45LD	40-41	R63M / R65	68-69
R27 / R27W	14-15	R45LDK / R45M	42-43	R70 / R75	70-71
R29 / R29U	16-17	R45MJ / R45R	44-45	R76 / R77	72-73
R30 / R33S	18-19	R45S / R45TW	46-47	R80 / R85	74-75
R34 / R34JLD	20-21	R45W / R47	48-49	R85P / R95	76-77
R34W / R40	22-23	R50 / R50LD	50-51	R100 / WG2	78-79
R40SQ / R40TIR	24-25	R52 / R52EH	52-53	WG2S / WG2SB	80-81
R40W / R44	26-27	R54 / R55	54-55	WG5 / WG8	82-83
R44SQ / R44W	28-29	R55CTB / R55DB	56-57	WG9 / WG30	84-85
R45 / R45C	30-31	R55K / R55SC	58-59	WG40 / Top Trolley	86-87
R45D / R45DB	32-33	R56 / R57	60-61	JU10 / Bottom Cam	88-89

**Despite our difference in time zone and the distance, we choose to use Langver over suppliers within closer proximity as the product is good and the turnaround time is always quick.**

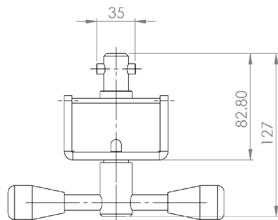
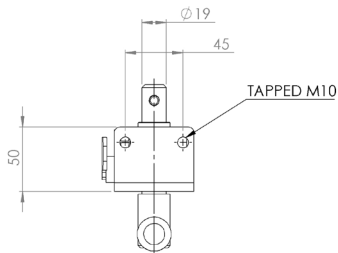
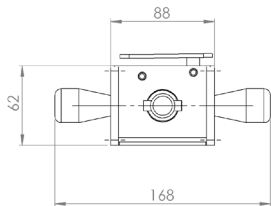
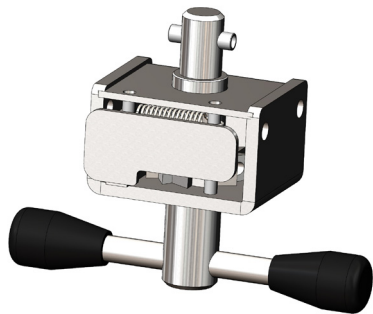
**Karren Cassway  
Demountable Concepts  
USA, Canada & Mexico**

# R10

**Originally designed for:**

Southfield Coachworks

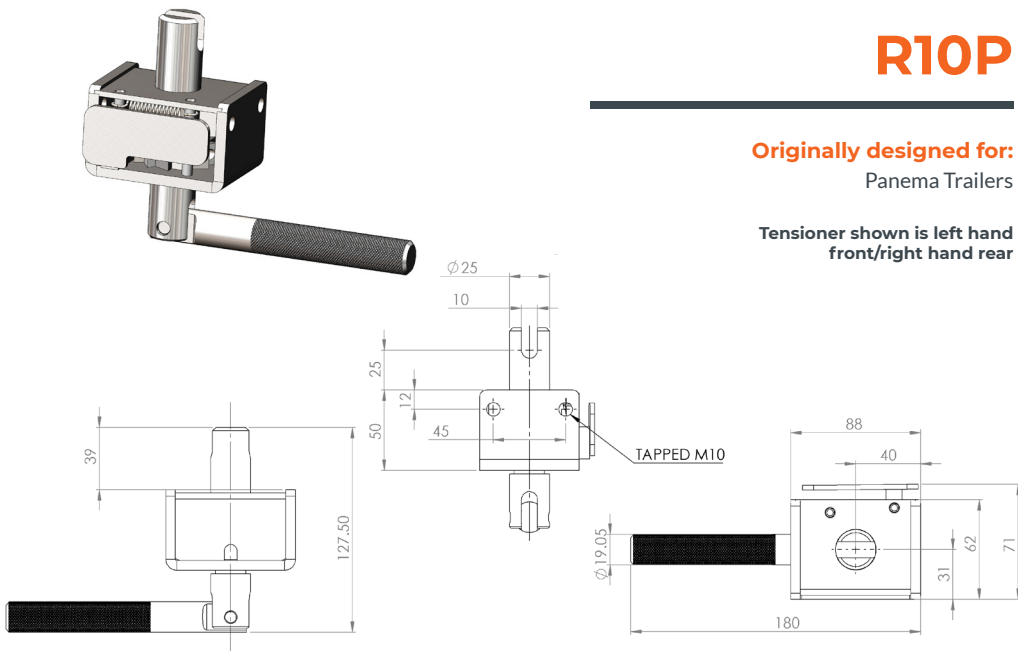
**Tensioner shown is left hand  
front/right hand rear**



# R10P

Originally designed for:  
Panema Trailers

Tensioner shown is left hand  
front/right hand rear

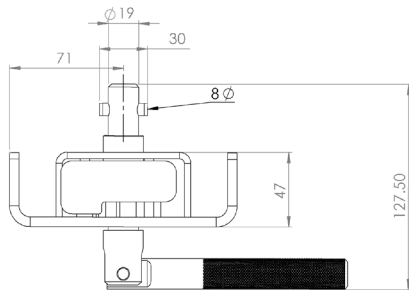
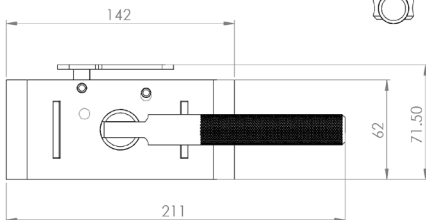
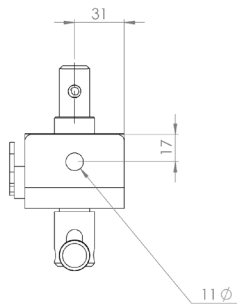
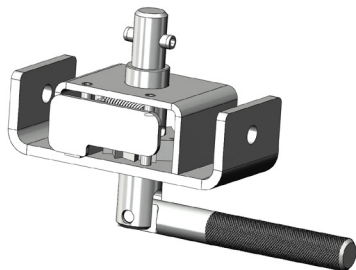


# R11

**Originally designed for:**

Southfield Coachworks

**Tensioner shown is left hand  
front/right hand rear**



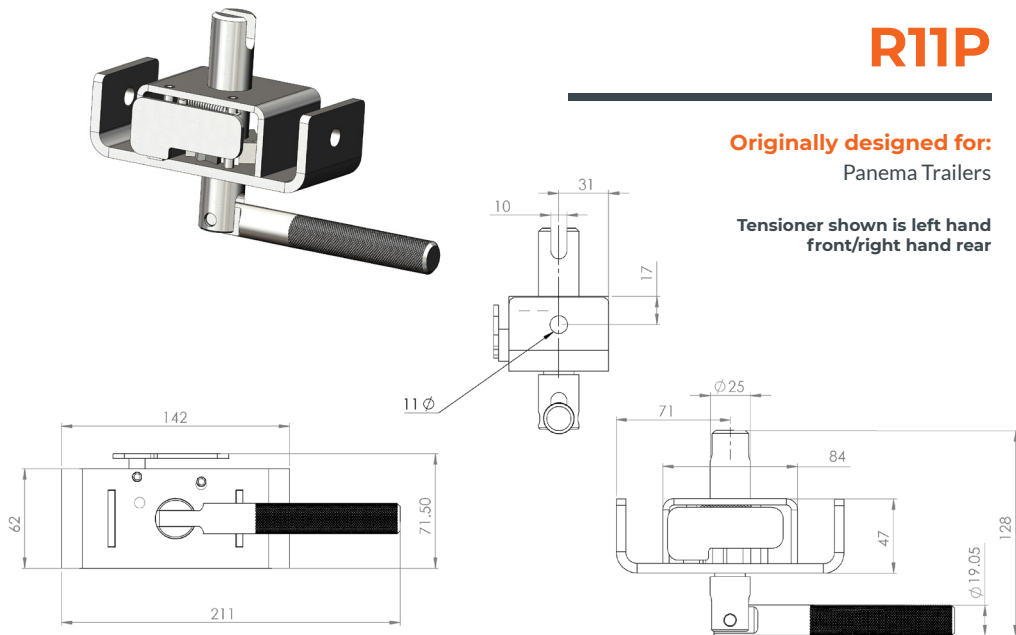


# R11P

Originally designed for:

Panema Trailers

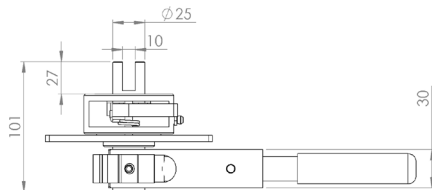
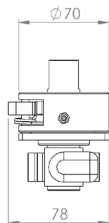
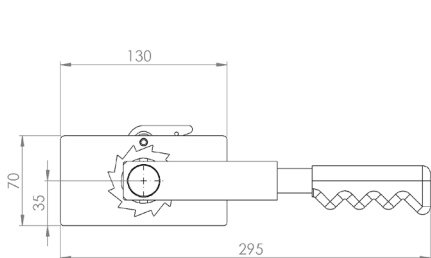
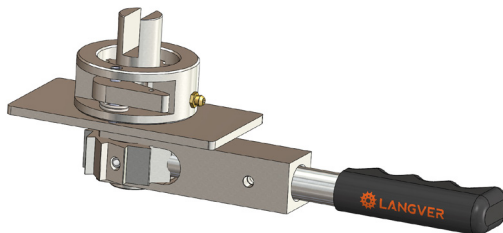
Tensioner shown is left hand  
front/right hand rear



# R12

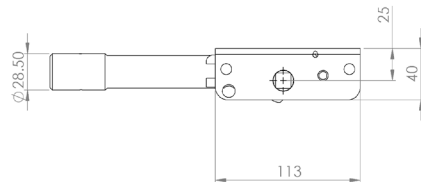
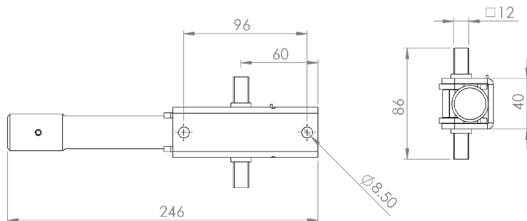
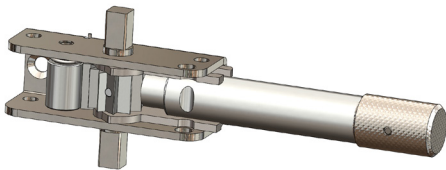
## Popular universal tensioner

Tensioner shown is left hand  
front/right hand rear



# R16

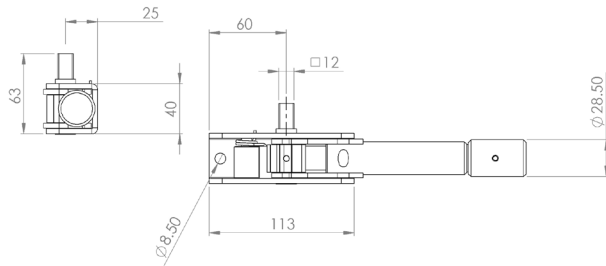
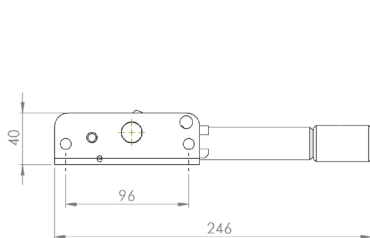
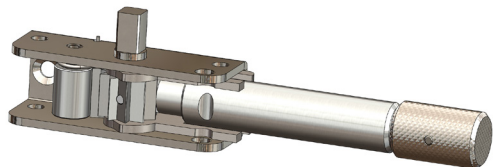
Originally designed for:  
TSE, Germany



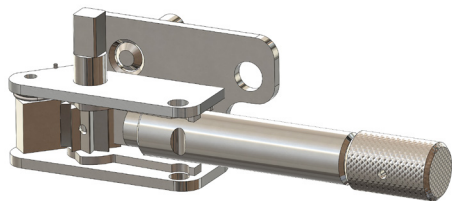
# R17

## Popular universal tensioner

Tensioner shown is left hand  
front/right hand rear



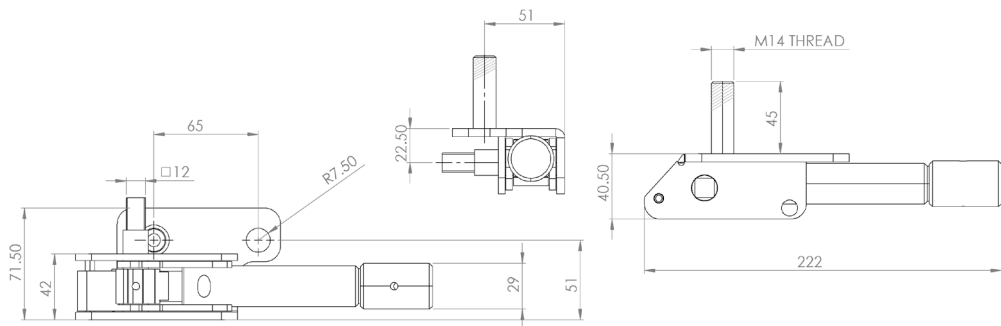
# R17T



**Originally designed for:**

Tirsan Trailers

**Tensioner shown is left hand  
front/right hand rear**

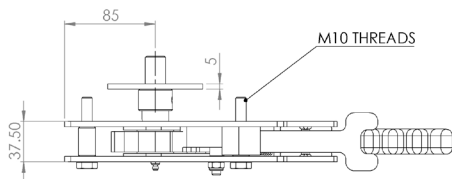
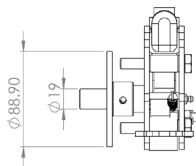
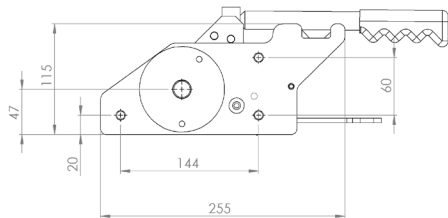
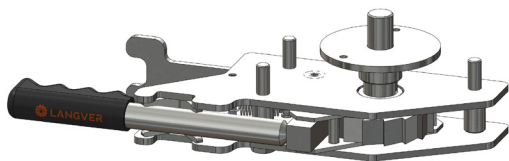


# R27

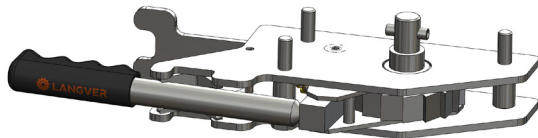
Originally designed for:

SDC Trailers

Tensioner shown is left hand  
front/right hand rear

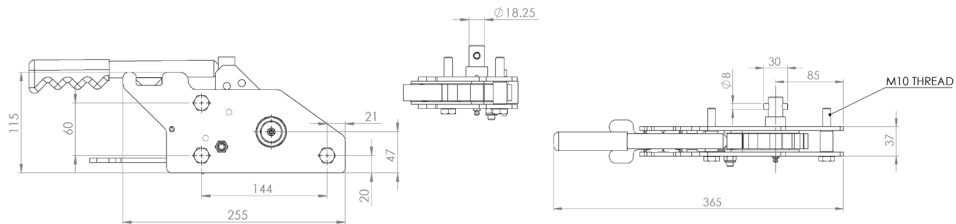


# R27W



**Originally designed for:**  
SDC Trailers

**Tensioner shown is left hand  
front/right hand rear**

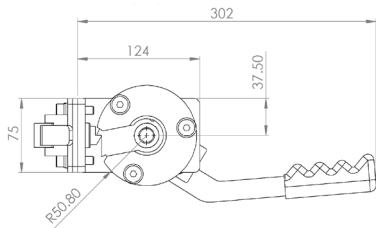
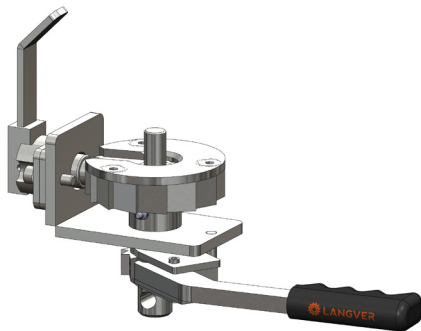
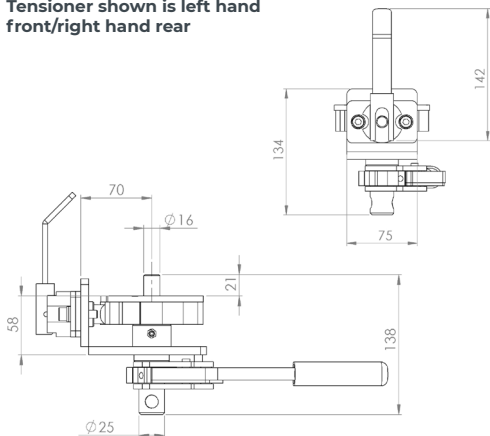


# R29

Originally designed for:

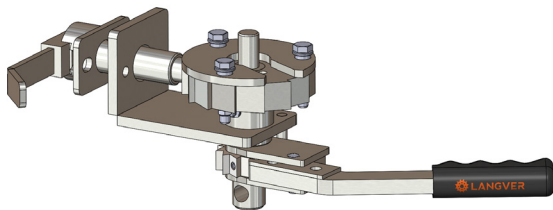
Boalloy Industries

Tensioner shown is left hand  
front/right hand rear



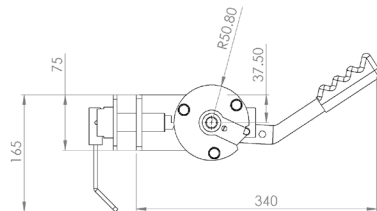
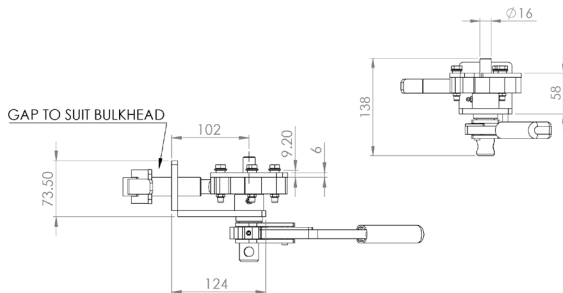


# R29U



**Originally designed for:**  
Curtainsider Inc

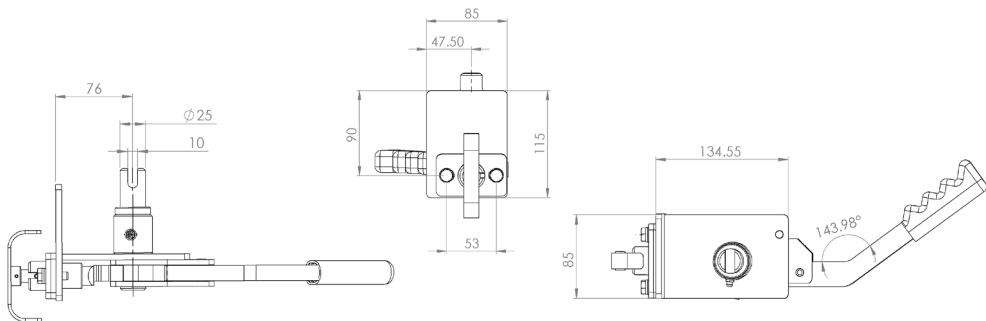
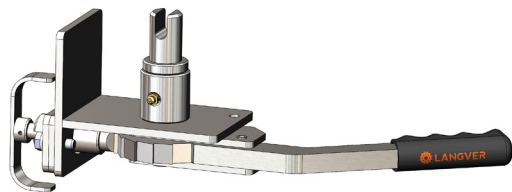
**Tensioner shown is left hand  
front/right hand rear**



# R30

## Popular universal tensioner

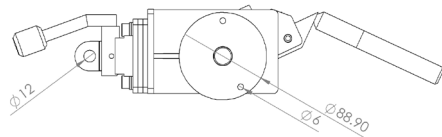
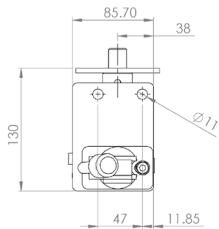
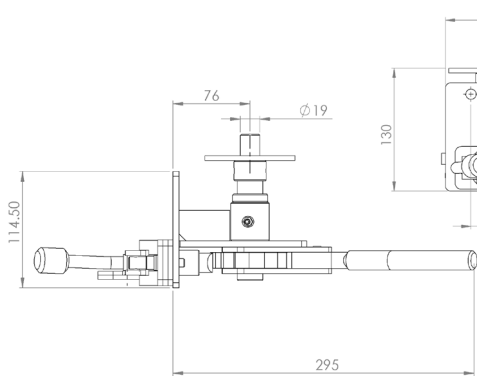
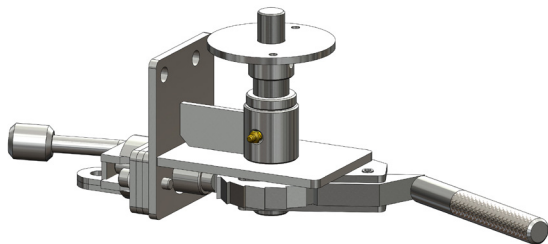
Tensioner shown is left hand  
front/right hand rear



# R33S

Originally designed for:  
SDC Trailers

Tensioner shown is left hand  
front/right hand rear

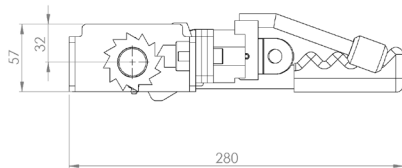
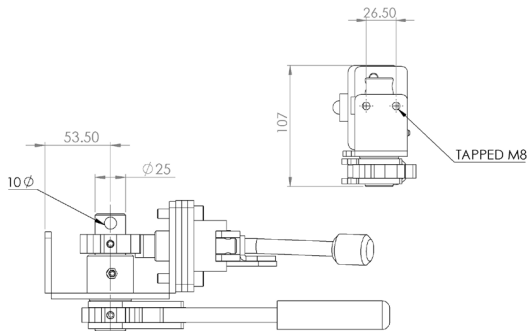
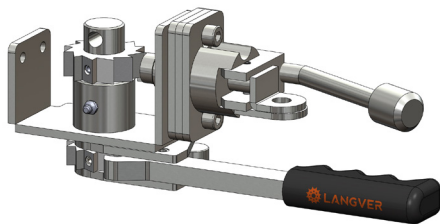


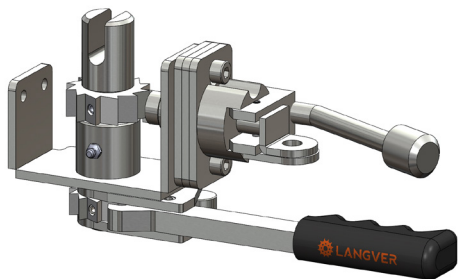
# R34

Originally designed for:

SDC Trailers

Tensioner shown is left hand  
front/right hand rear



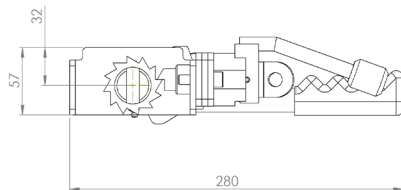
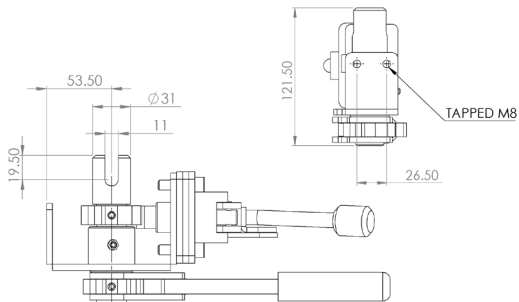


# R34JLD

Originally designed for:

Lawrence David

Tensioner shown is left hand  
front/right hand rear

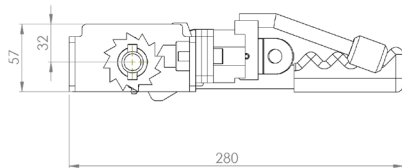
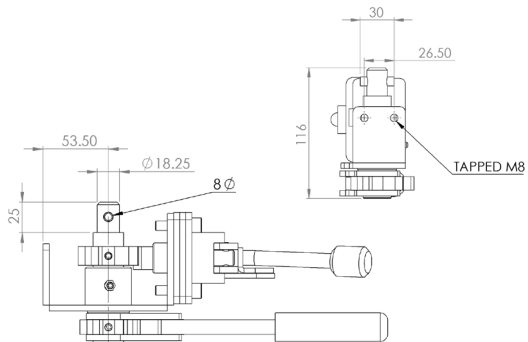
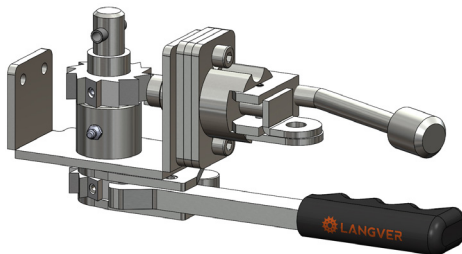


# R34W

Originally designed for:

SDC Trailers

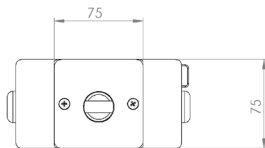
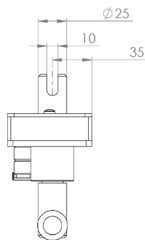
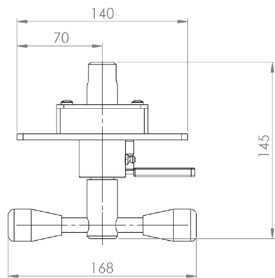
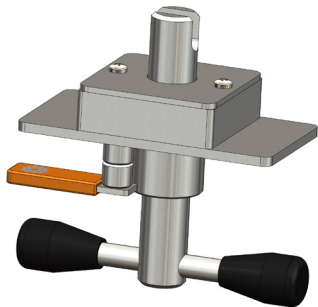
Tensioner shown is left hand  
front/right hand rear



# R40

Popular universal tensioner

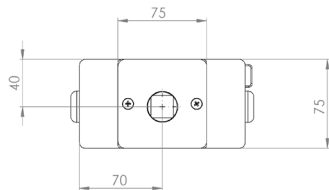
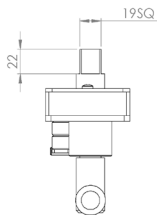
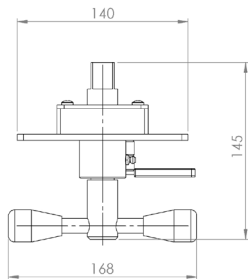
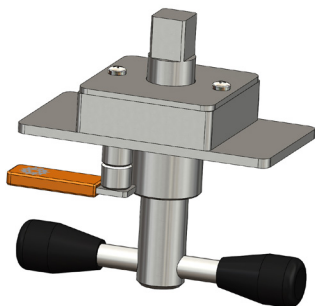
Tensioner shown is left hand  
front/right hand rear



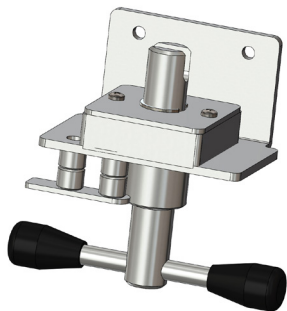
# R40SQ

## Popular universal tensioner

Tensioner shown is left hand  
front/right hand rear



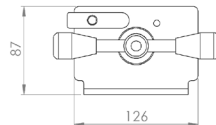
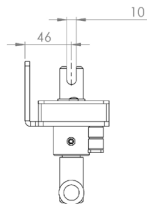
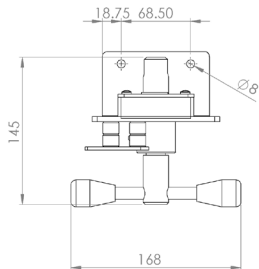




# R40TIR

Popular universal tensioner

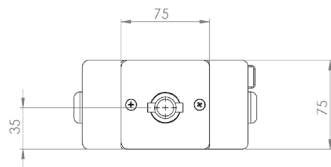
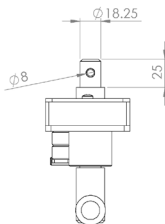
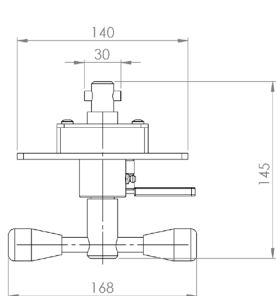
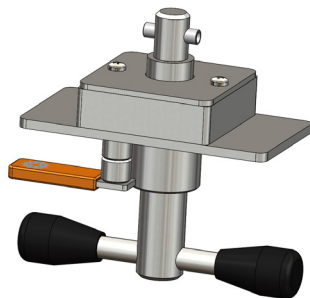
Tensioner shown is left hand  
front/right hand rear



# R40W

## Popular universal tensioner

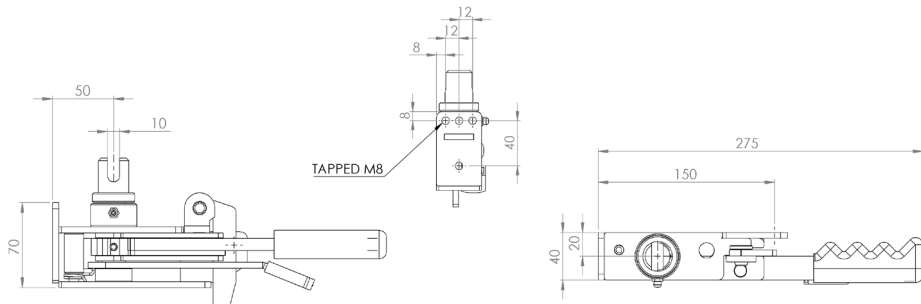
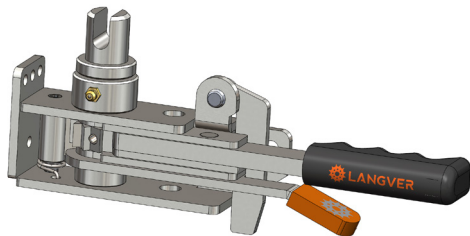
Tensioner shown is left hand  
front/right hand rear



# R44

## Popular universal tensioner

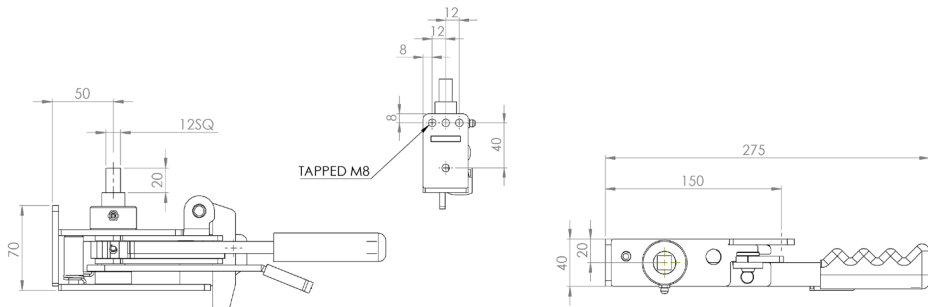
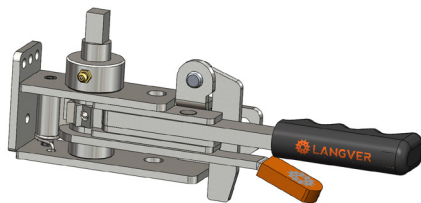
Tensioner shown is left hand  
front/right hand rear



# R44SQ

## Popular universal tensioner

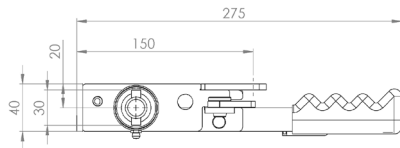
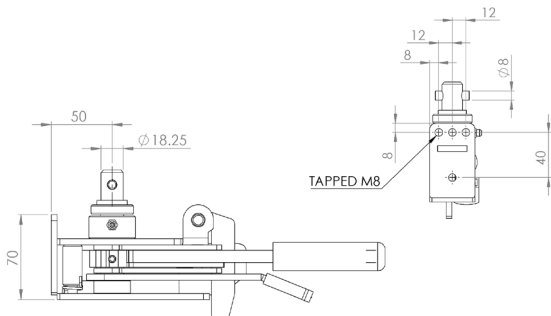
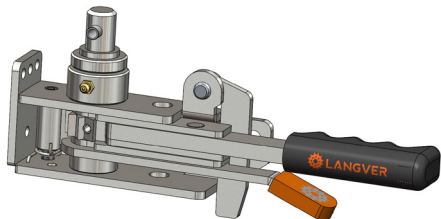
Tensioner shown is left hand  
front/right hand rear



# R44W

Originally designed for:  
SDC Trailers

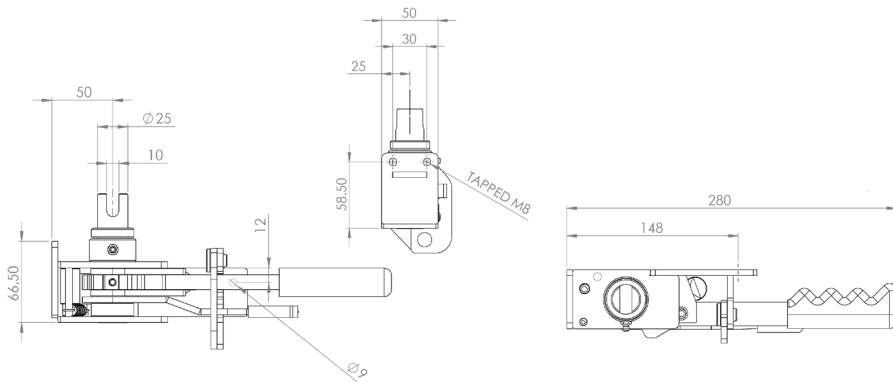
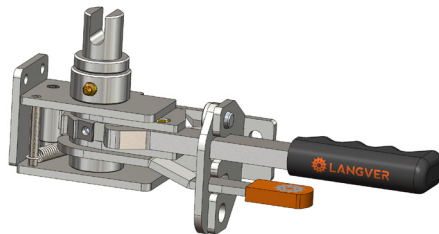
Tensioner shown is left hand  
front/right hand rear



# R45

## Popular universal tensioner

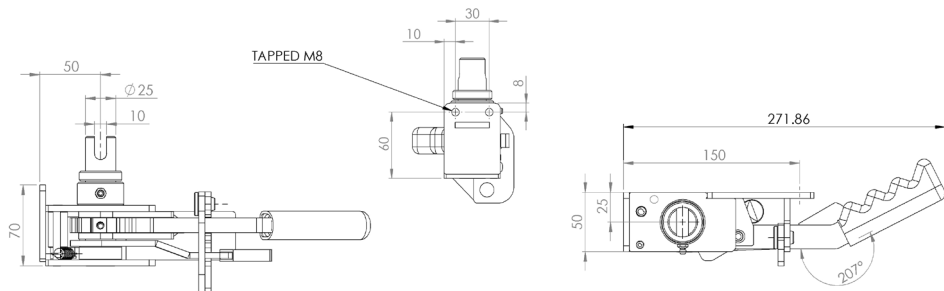
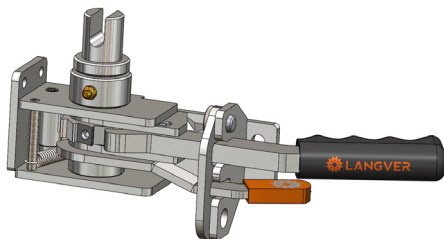
Tensioner shown is left hand front/right hand rear



# R45C

Popular universal tensioner

Tensioner shown is left hand  
front/right hand rear

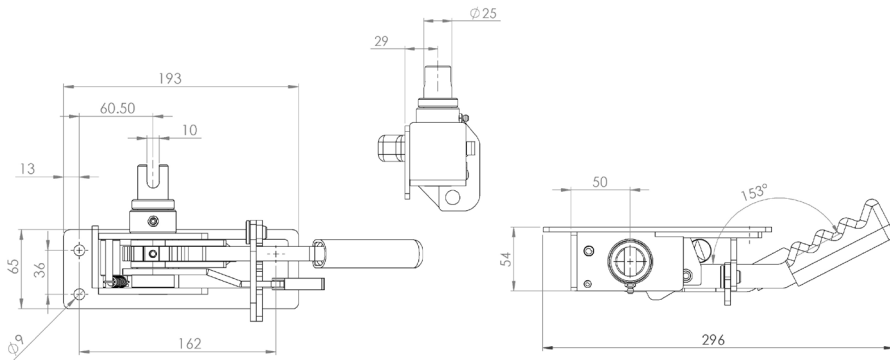
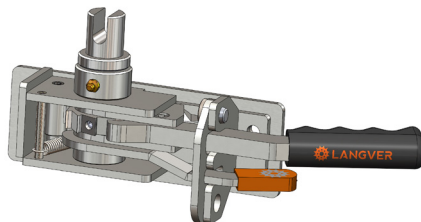


# R45D

Originally designed for:

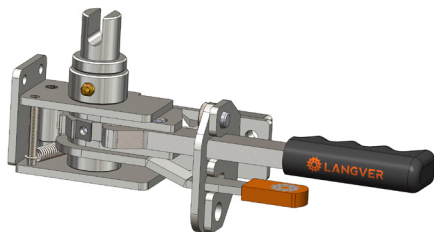
Montracon Trailers

Tensioner shown is left hand  
front/right hand rear



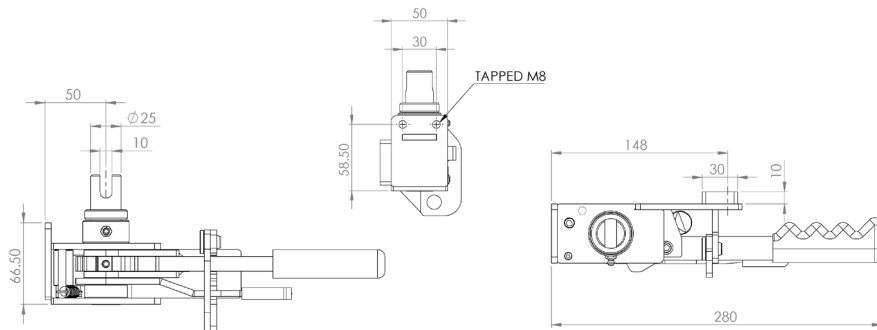


# R45DB



**Originally designed for:**  
Don-Bur Bodies & Trailers

**Tensioner shown is left hand  
front/right hand rear**

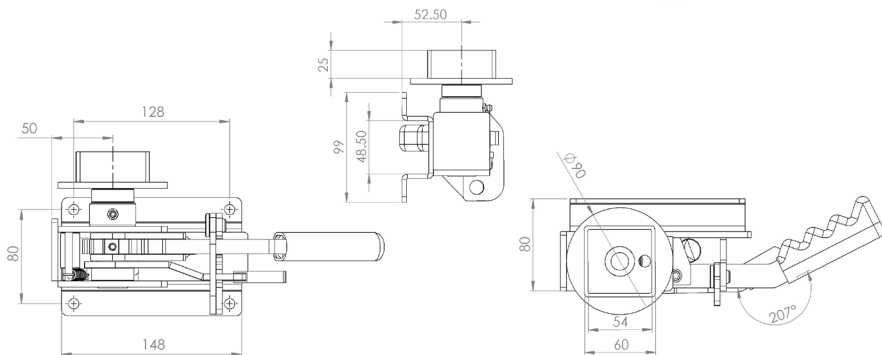
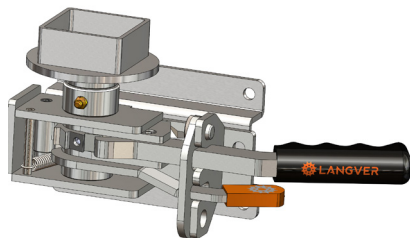


# R45DN

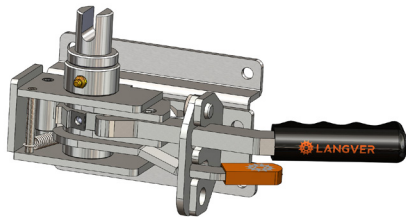
**Originally designed for:**

Dennison Trailers

**Tensioner shown is left hand  
front/right hand rear**



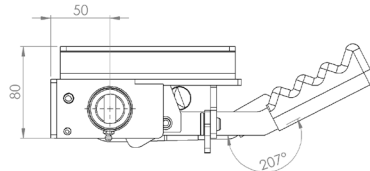
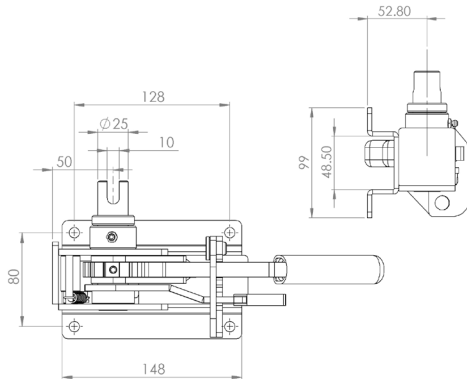
# R45DN SLOTTED



**Originally designed for:**

Dennison Trailers

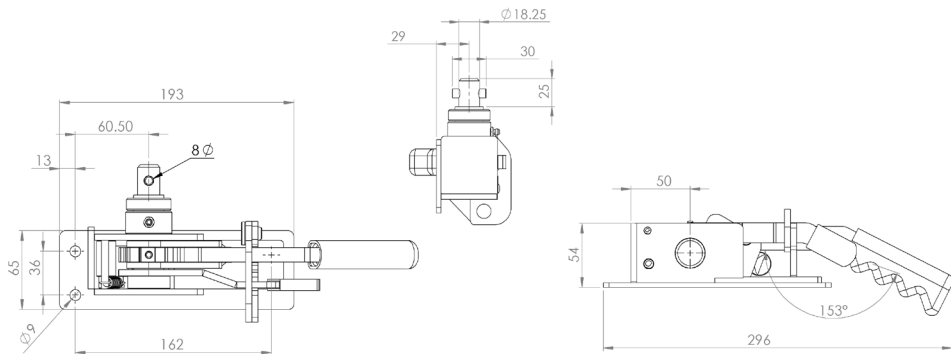
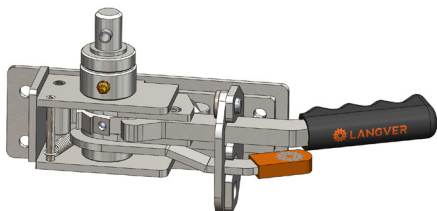
**Tensioner shown is left hand  
front/right hand rear**



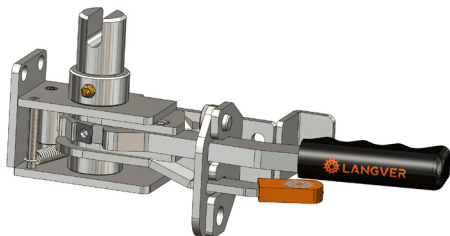
# R45DW

Originally designed for:  
SDC Trailers

Tensioner shown is left hand  
front/right hand rear

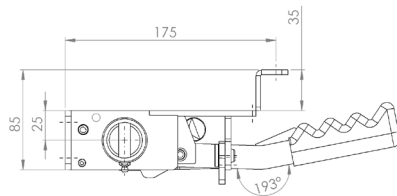
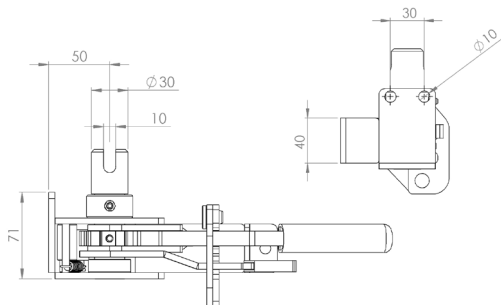


# R45K



**Originally designed for:**  
S Cartwright & Sons

**Tensioner shown is left hand  
front/right hand rear**

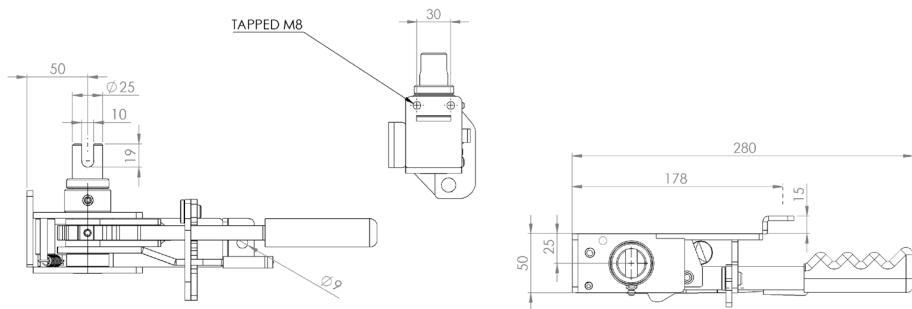
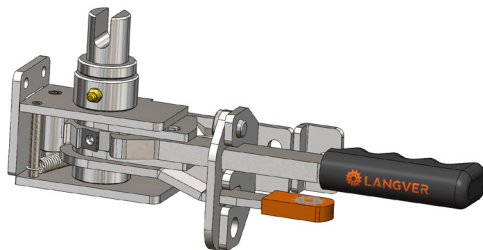


# R45KT

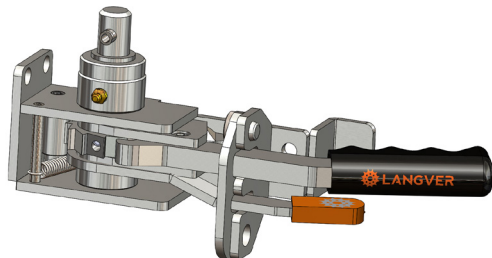
Originally designed for:

Tiger Trailers

Tensioner shown is left hand  
front/right hand rear

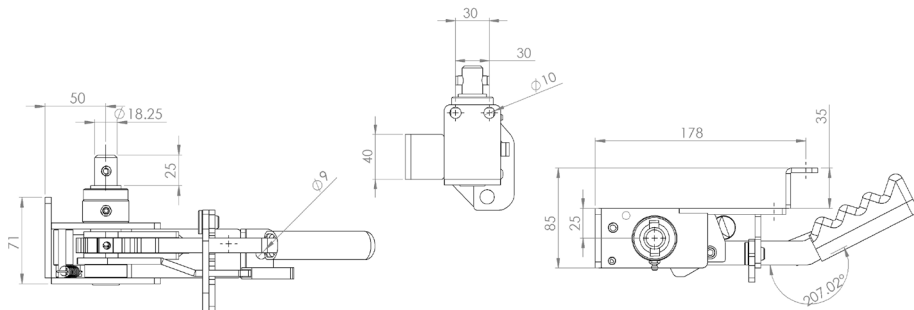


# R45KW



Originally designed for:  
SDC Trailers

Tensioner shown is left hand  
front/right hand rear

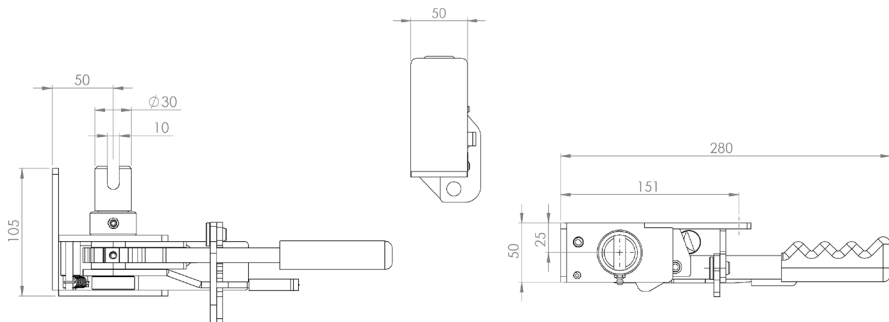
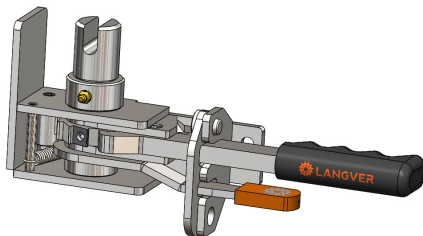


# R45L

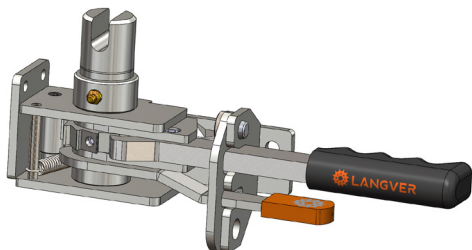
Originally designed for:

S Cartwright & Sons

Tensioner shown is left hand  
front/right hand rear





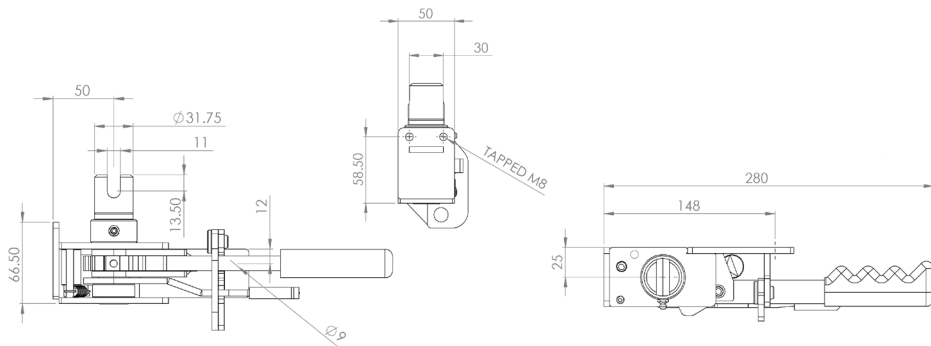


# R45LD

**Originally designed for:**

Lawrence David

**Tensioner shown is left hand  
front/right hand rear**

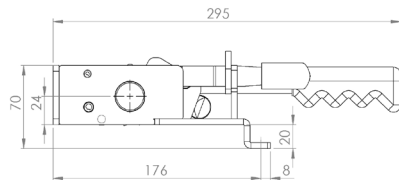
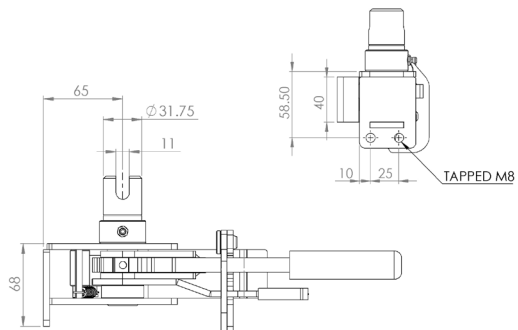
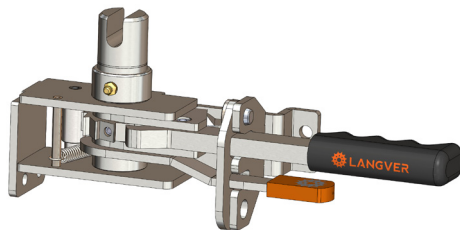


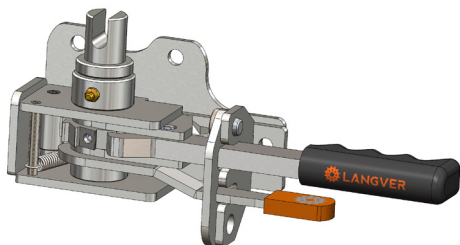
# R45LDK

Originally designed for:

Lawrence David

Tensioner shown is left hand  
front/right hand rear

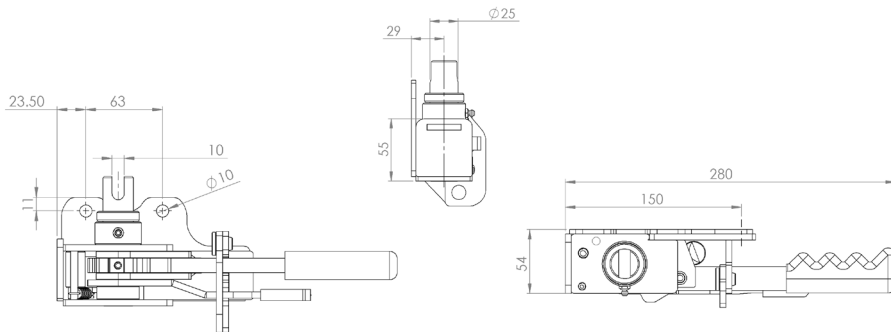




## R45M

**Originally designed for:**  
Montracon Trailers

**Tensioner shown is left hand  
front/right hand rear**

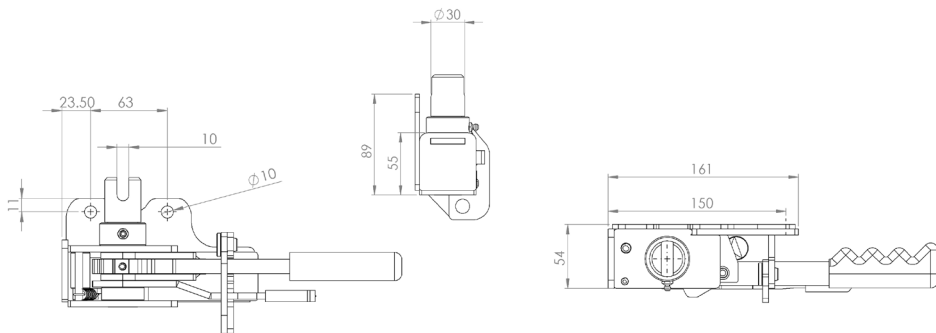
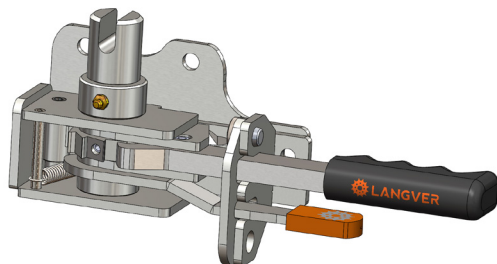


# R45MJ

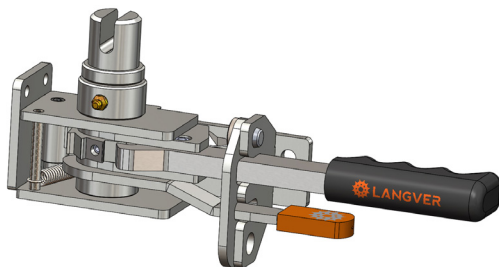
Originally designed for:

S Cartwright & Sons

Tensioner shown is left hand  
front/right hand rear



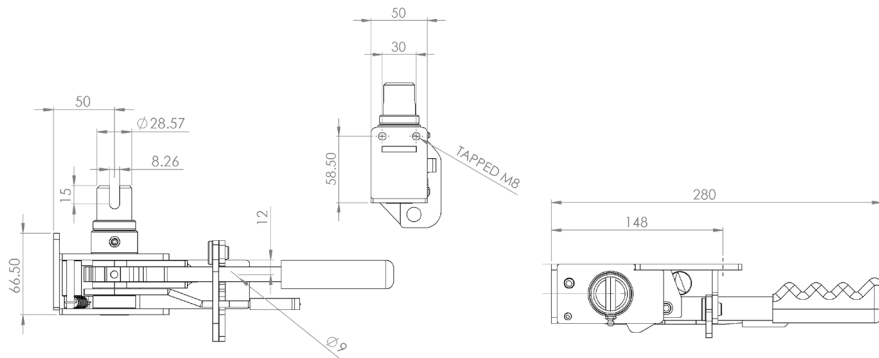
# R45R



**Originally designed for:**

Roco Trailers

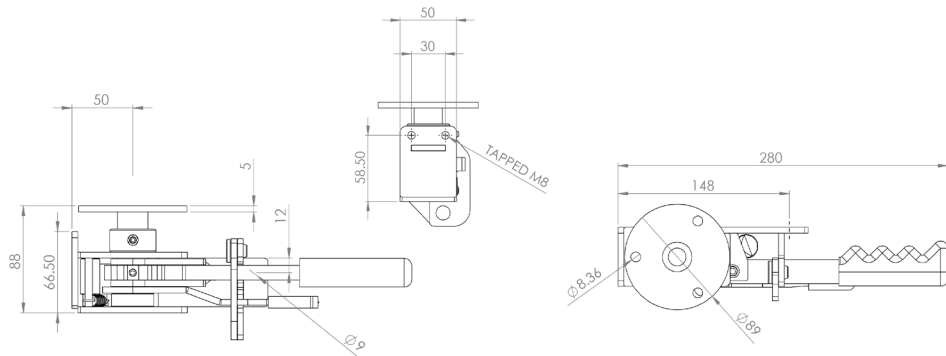
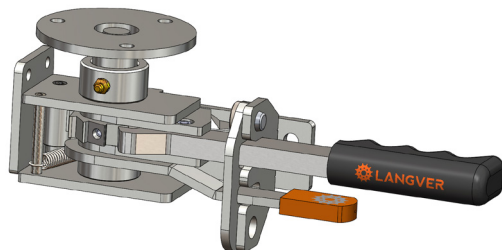
**Tensioner shown is left hand  
front/right hand rear**



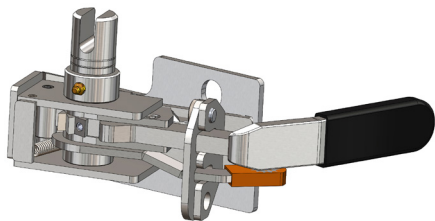
# R45S

## Popular universal tensioner

Tensioner shown is left hand  
front/right hand rear



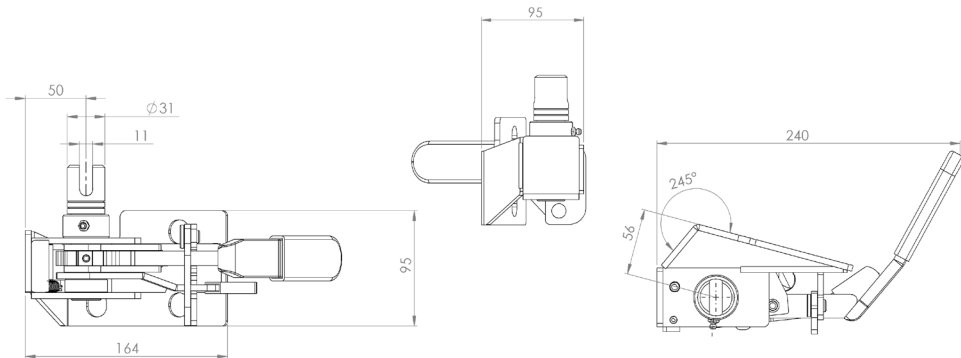
# R45TW



**Originally designed for:**

Lawrence David

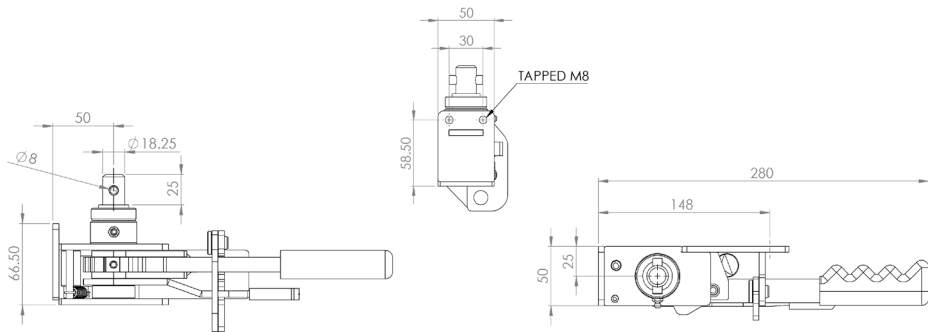
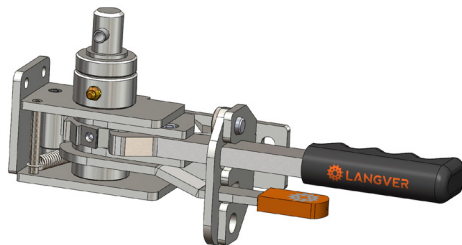
**Tensioner shown is left hand  
front/right hand rear**



# R45W

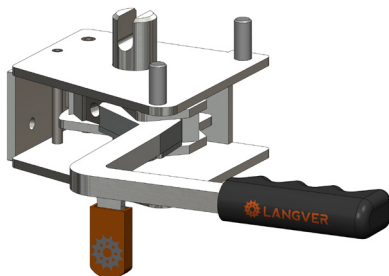
## Popular universal tensioner

Tensioner shown is left hand  
front/right hand rear



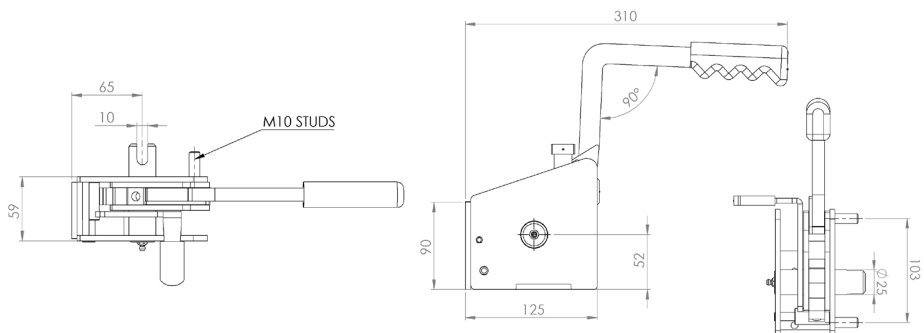


# R47



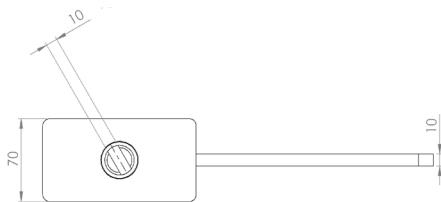
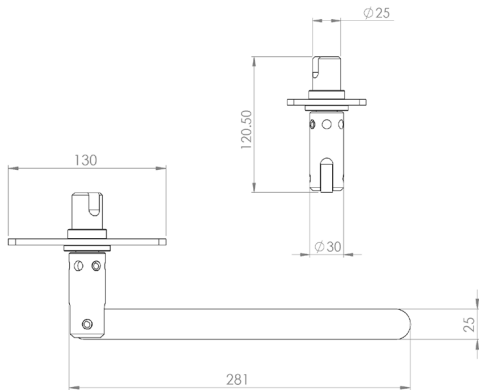
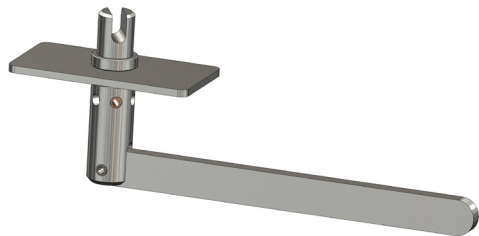
**Originally designed for:**  
Montracon Trailers

**Tensioner shown is left hand  
front/right hand rear**



# R50

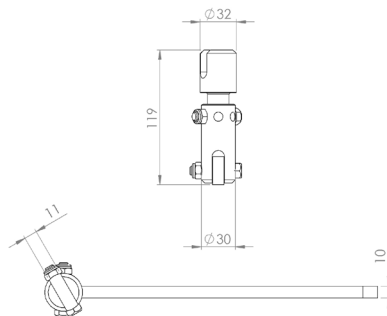
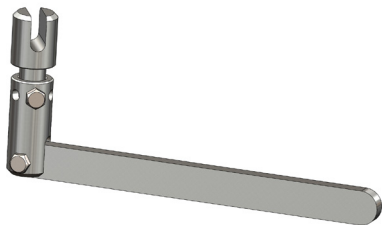
Popular universal tensioner



# R50LD

Originally designed for:

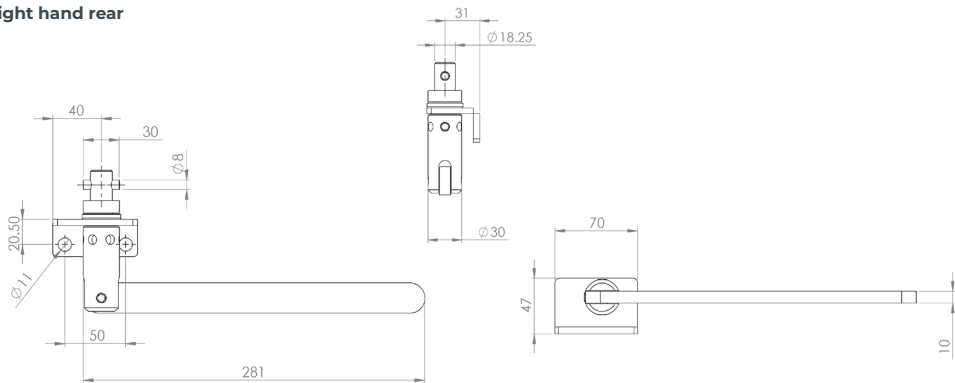
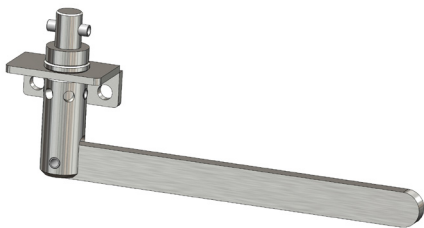
Lawrence David



# R52

Originally designed for:  
SDC Trailers

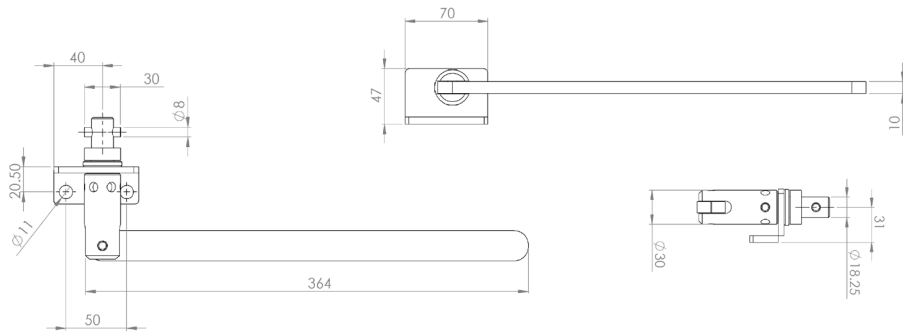
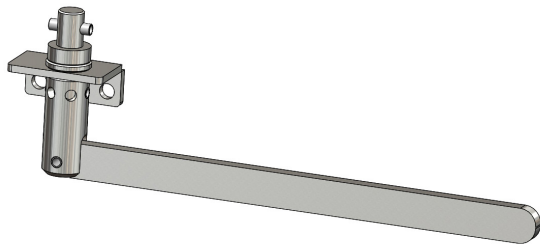
Tensioner shown is left hand  
front/right hand rear



# R52EH

Originally designed for:  
SDC Trailers

Tensioner shown is left hand  
front/right hand rear

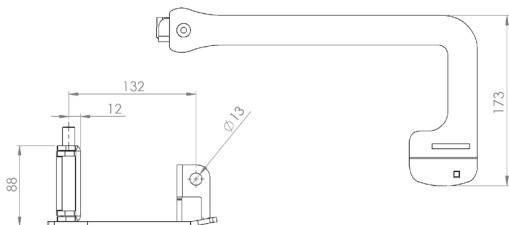
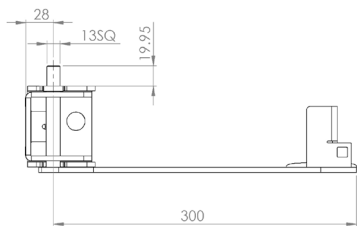
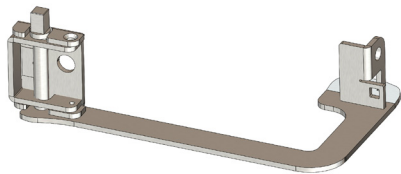


# R54

**Originally designed for:**

German spares market

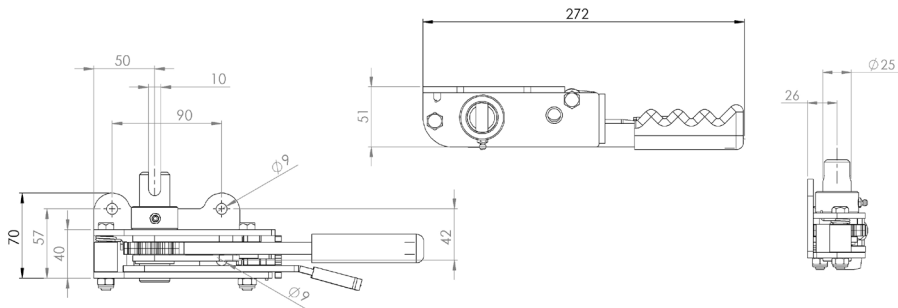
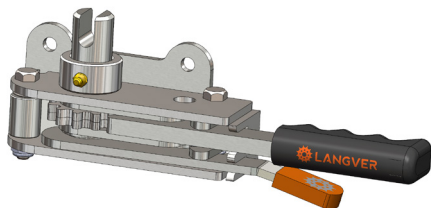
**Tensioner shown is left hand  
front/right hand rear**



# R55

Popular universal tensioner

Tensioner shown is left hand  
front/right hand rear

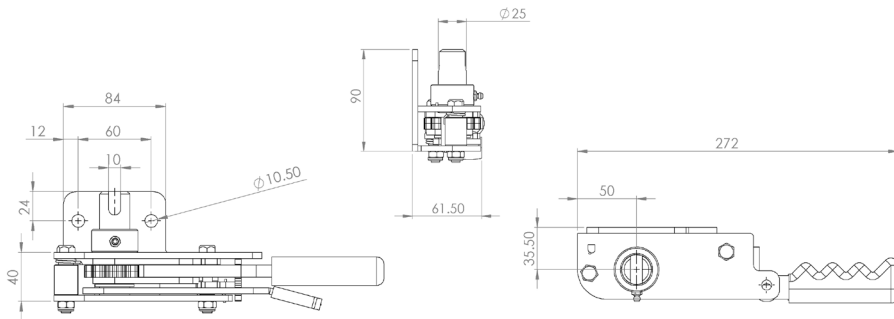
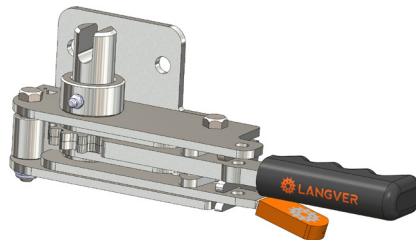


# R55CTB

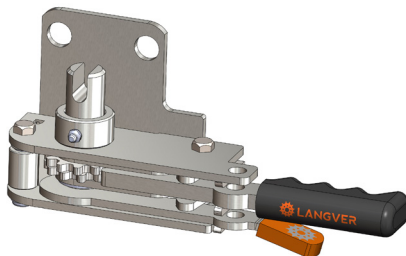
Originally designed for:

Collier Truck Builders

Tensioner shown is left hand  
front/right hand rear



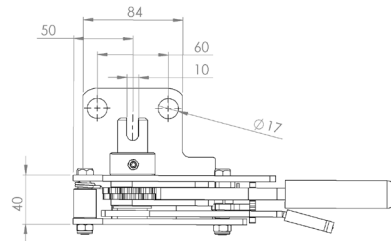
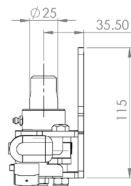
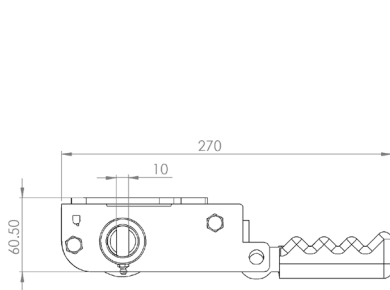




# R55DB

**Originally designed for:**  
Don-Bur Bodies & Trailers

**Tensioner shown is left hand  
front/right hand rear**

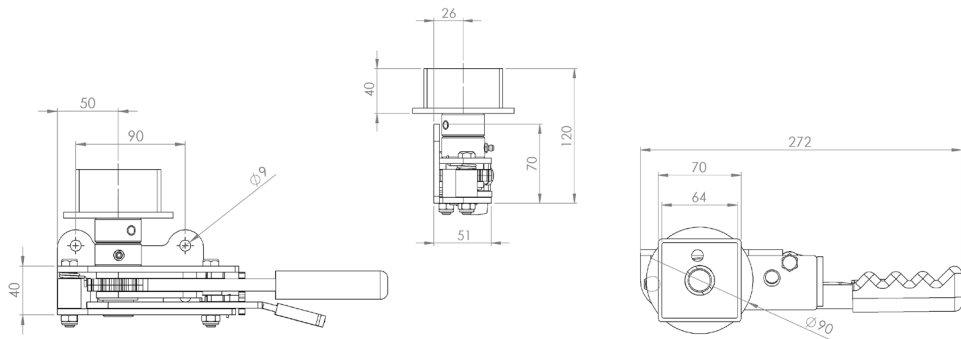
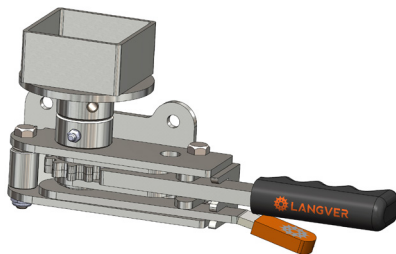


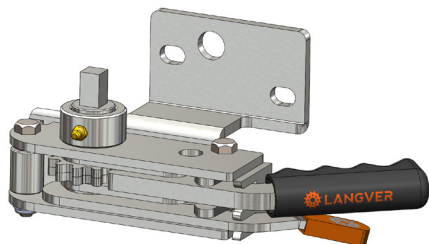
# R55K

Originally designed for:

Don-Bur Bodies & Trailers

Tensioner shown is left hand  
front/right hand rear

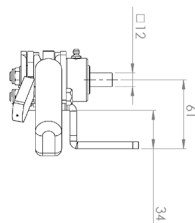
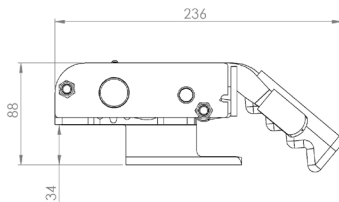
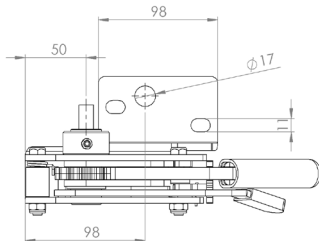




# R55SC

**Originally designed for:**  
Schmitz Cargobull

**Tensioner shown is left hand  
front/right hand rear**

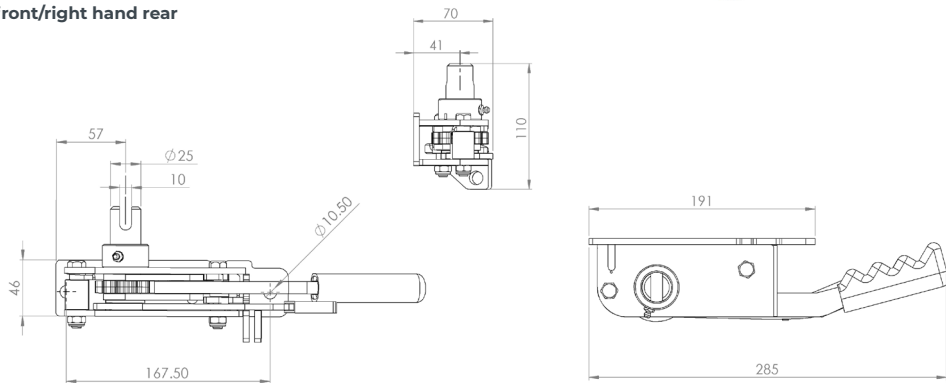
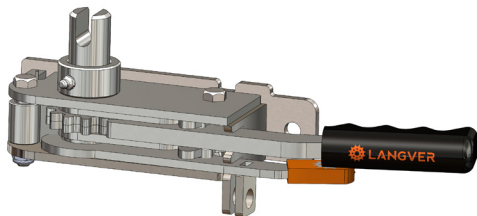


# R56

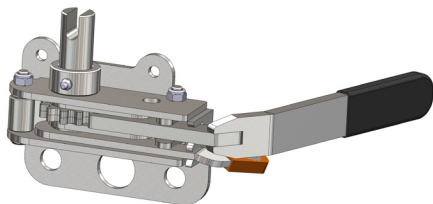
Originally designed for:

S Cartwright & Sons

Tensioner shown is left hand  
front/right hand rear

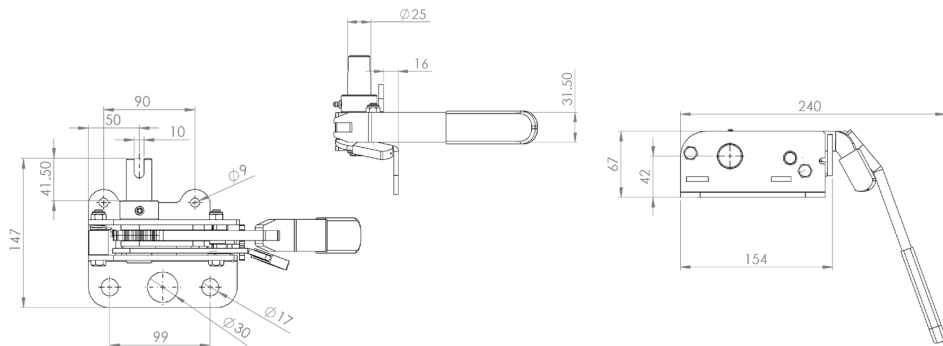


# R57



**Originally designed for:**  
Don-Bur Bodies & Trailers

**Tensioner shown is left hand  
front/right hand rear**

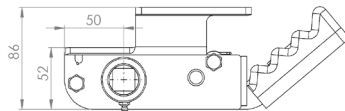
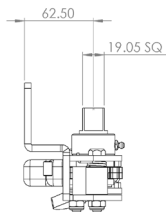
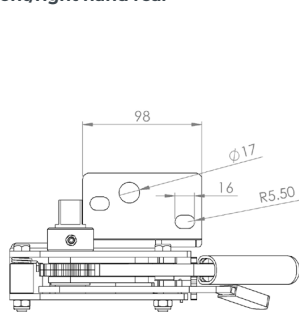
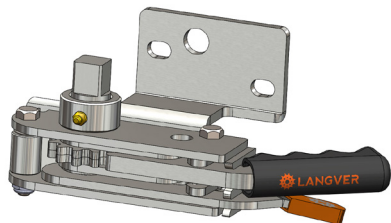


# R58

**Originally designed for:**

Schmitz Cargobull

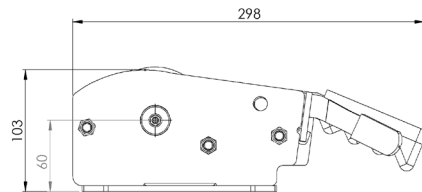
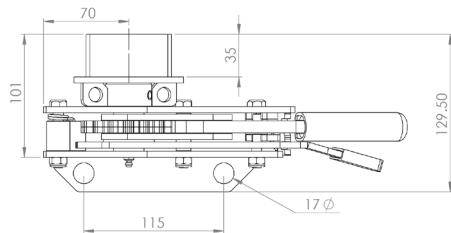
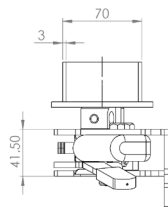
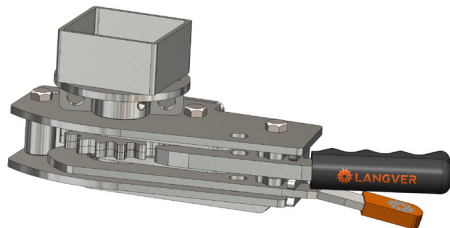
**Tensioner shown is left hand  
front/right hand rear**



# R60K

**Originally designed for:**  
Don-Bur Bodies & Trailers

**Tensioner shown is left hand  
front/right hand rear**

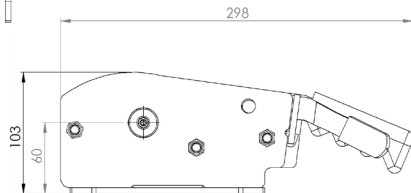
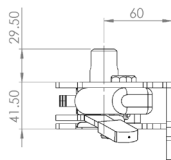
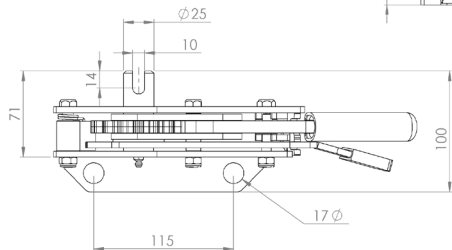
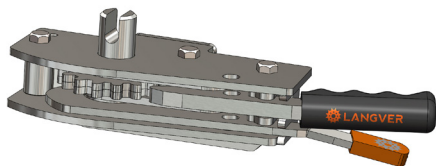


# R60K SLOTTED

Originally designed for:

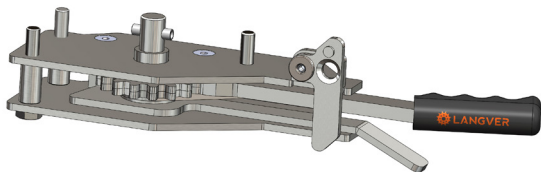
Don-Bur Bodies & Trailers

Tensioner shown is left hand  
front/right hand rear



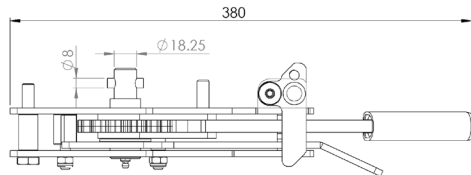
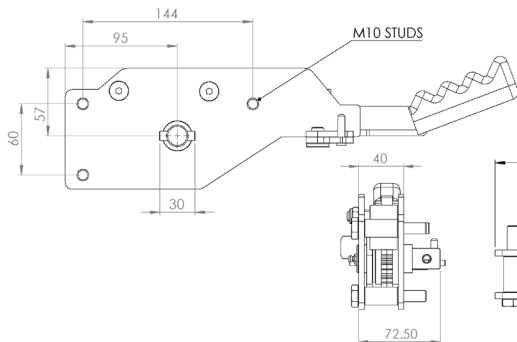


# R61



Originally designed for:  
SDC Trailers

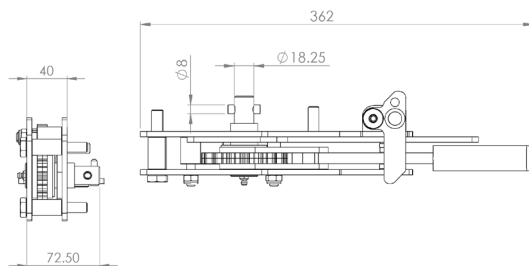
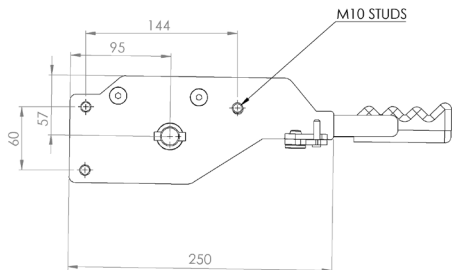
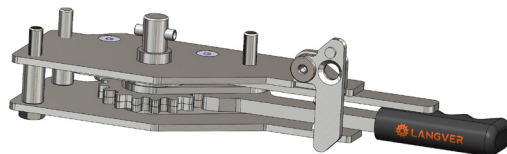
Tensioner shown is left hand  
front/right hand rear



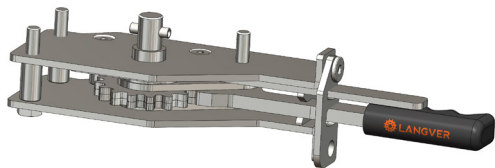
# R6Ti

Originally designed for:  
SDC Trailers

Tensioner shown is left hand  
front/right hand rear

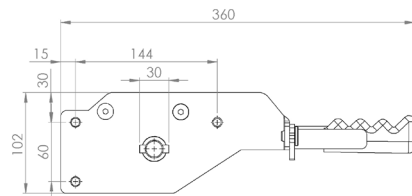
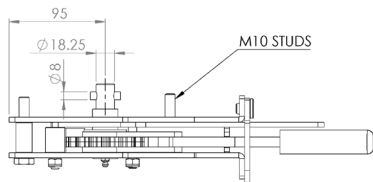
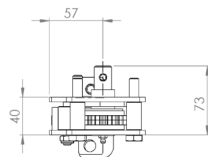


# R61iM



Originally designed for:  
SDC Trailers

Tensioner shown is left hand  
front/right hand rear

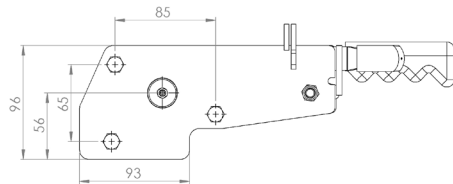
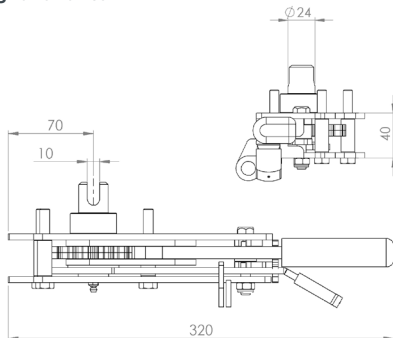
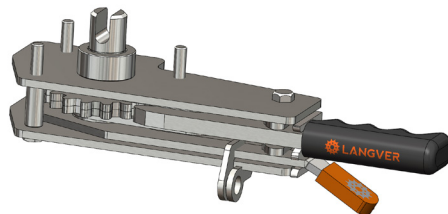


# R63M

**Originally designed for:**

Montracon Trailers

**Tensioner shown is left hand  
front/right hand rear**

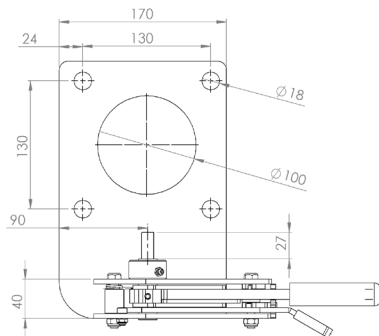
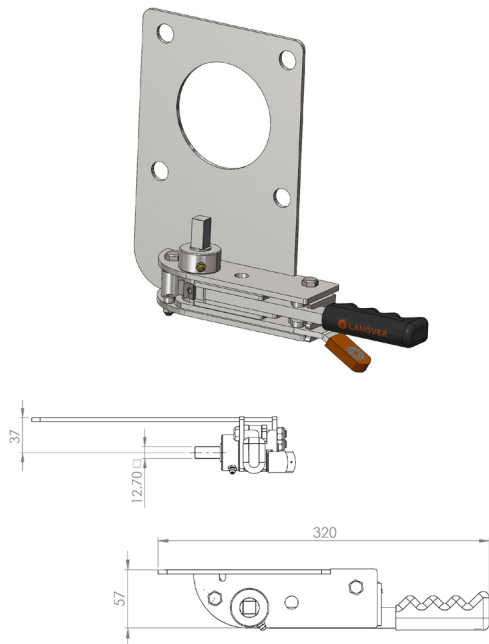


# R65

**Originally designed for:**

Crane Fruehauf

**Tensioner shown is left hand  
front/right hand rear**

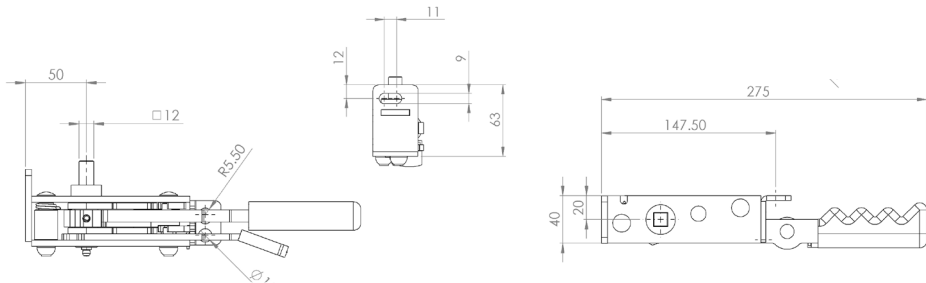
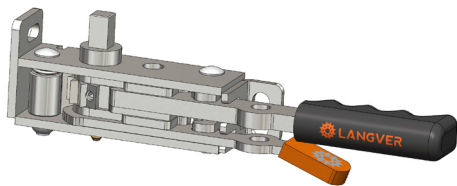


# R70

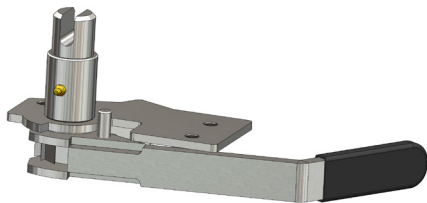
## Originally designed for:

Direct replacement for the Thiriet tensioner

Tensioner shown is left hand  
front/right hand rear



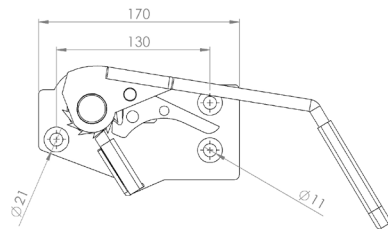
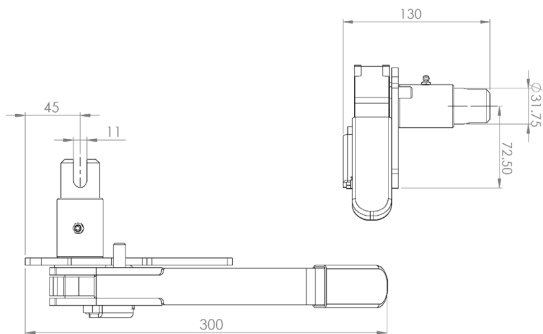
# R75



**Originally designed for:**

Lawrence David

**Tensioner shown is left hand  
front/right hand rear**

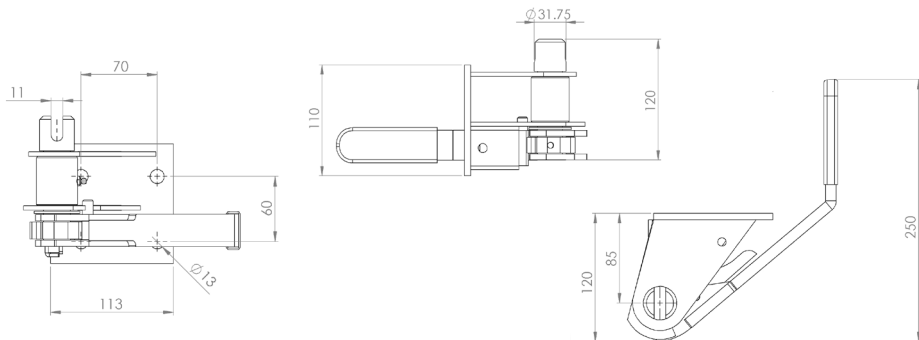
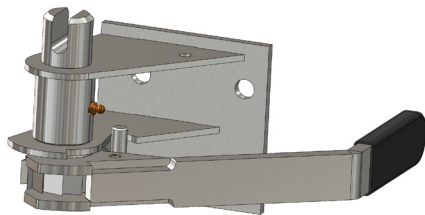


# R76

Originally designed for:

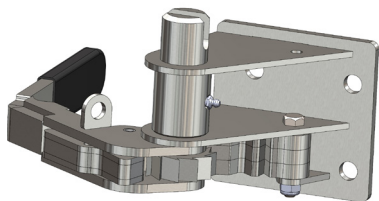
Lawrence David

Tensioner shown is left hand  
front/right hand rear





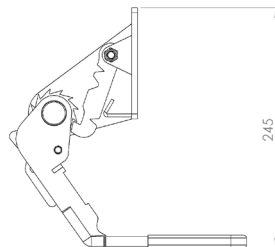
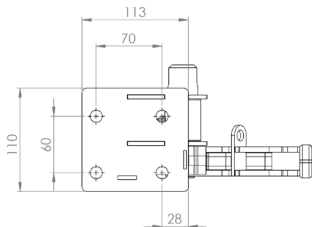
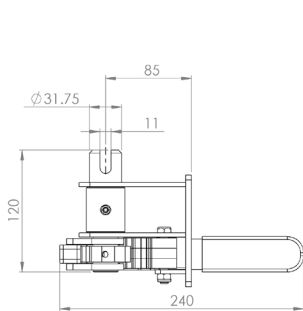
# R77



**Originally designed for:**

Lawrence David

**Tensioner shown is left hand  
front/right hand rear**

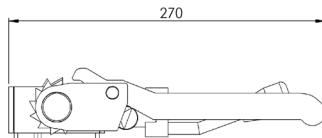
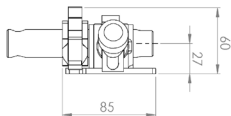
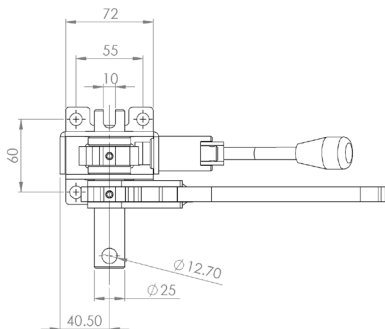
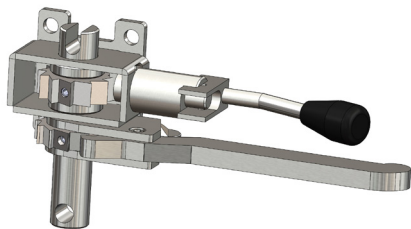


# R80

Originally designed for:

Boalloy

Tensioner shown is left hand  
front/right hand rear



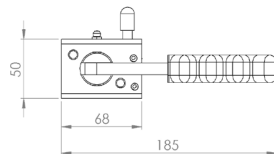
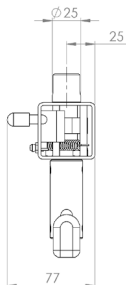
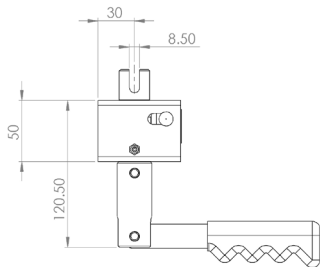
# R85



**Originally designed for:**

Panema Trailers

**Tensioner shown is left hand  
front/right hand rear**

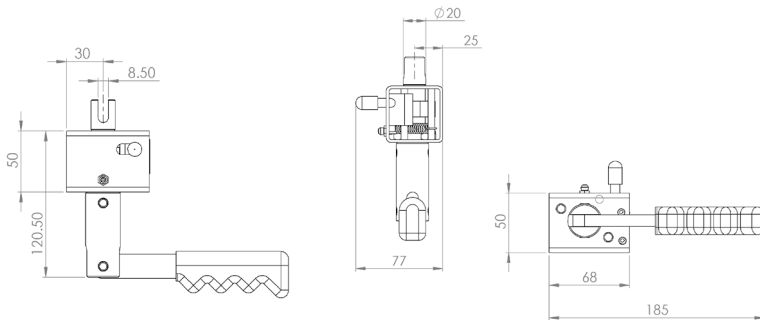


# R85P

**Originally designed for:**

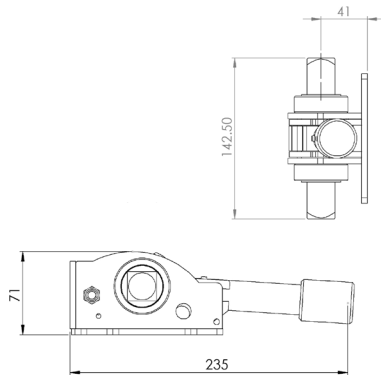
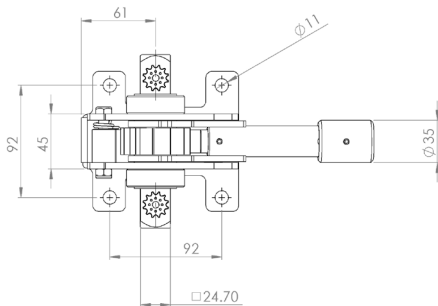
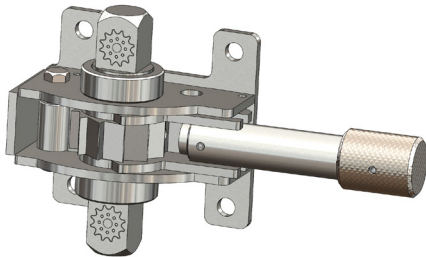
Panema Trailers

**Tensioner shown is left hand  
front/right hand rear**



# R95

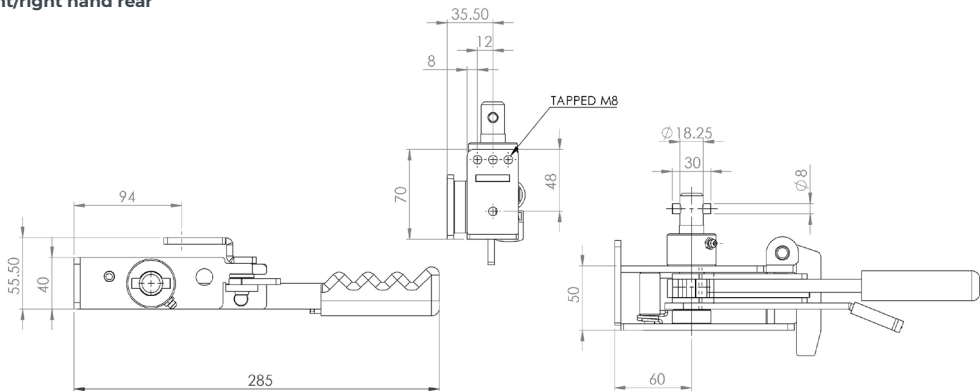
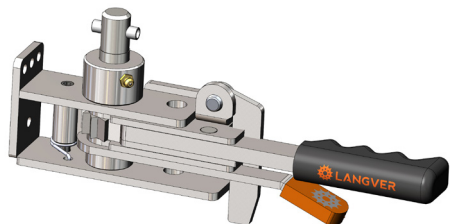
Popular universal tensioner



# R100

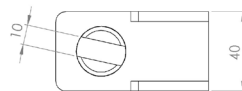
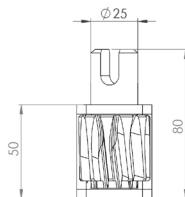
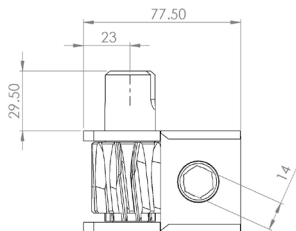
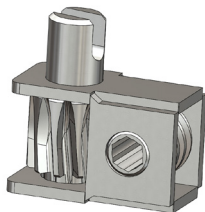
Originally designed for:  
SDC Trailers

Tensioner shown is left hand  
front/right hand rear



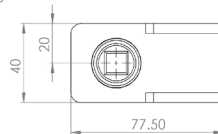
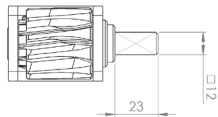
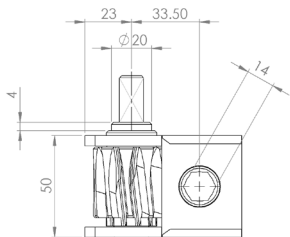
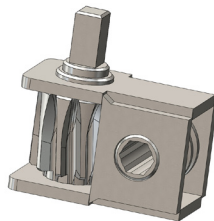
# WG2

Originally designed for:  
Titgemeyer



# WG2S

Originally designed for:  
Titgemeyer



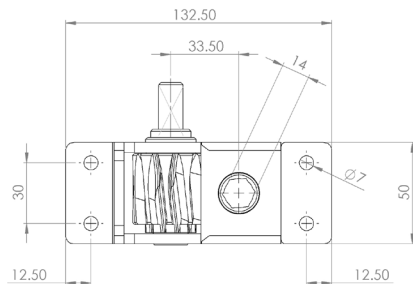
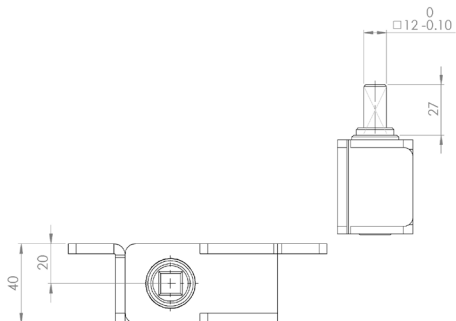
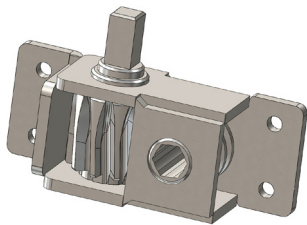


# WG2SB

Originally designed for:

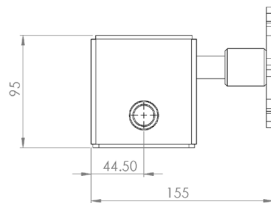
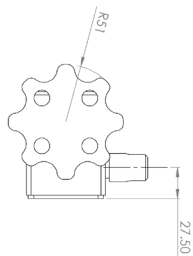
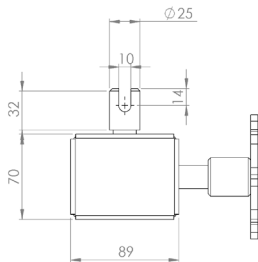
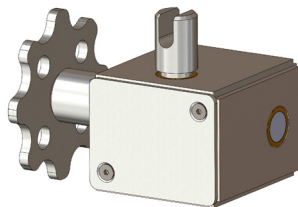
Titgemeyer

Tensioner shown is left hand  
front/right hand rear



# WG5

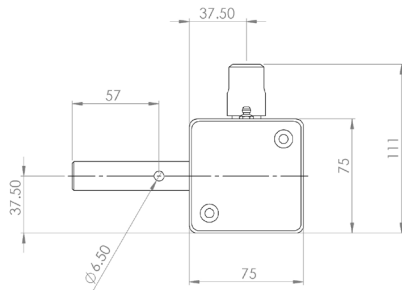
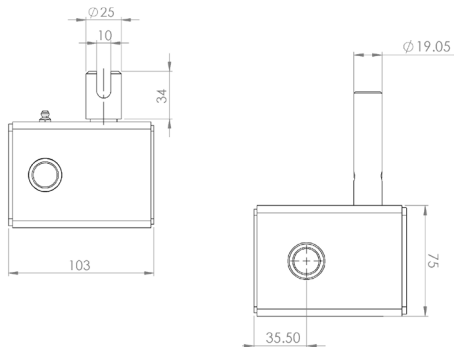
Popular universal tensioner



# WG8

Popular universal tensioner

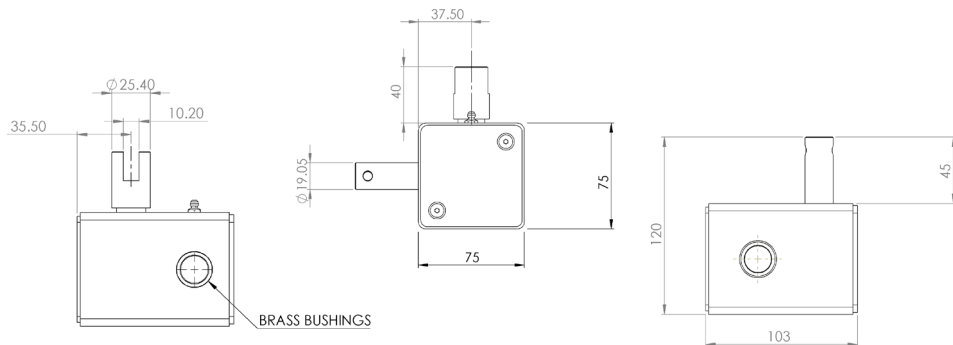
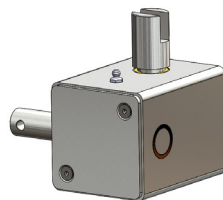
Tensioner shown is left hand  
front/right hand rear



# WG9

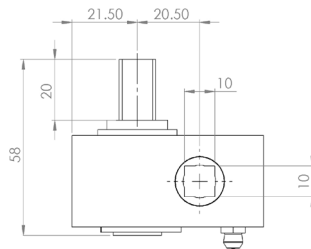
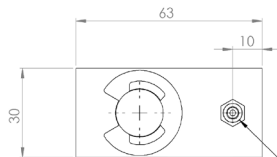
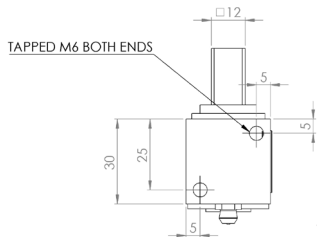
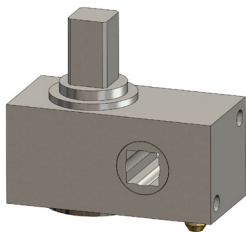
## Popular universal tensioner

Tensioner shown is left hand  
front/right hand rear



# WG30

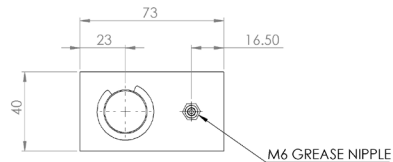
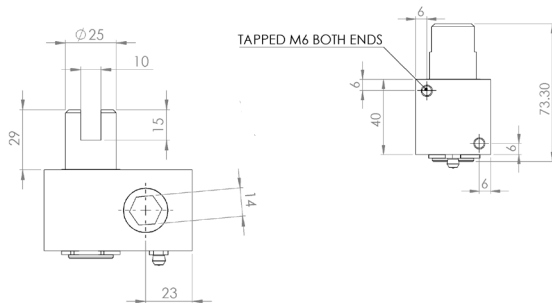
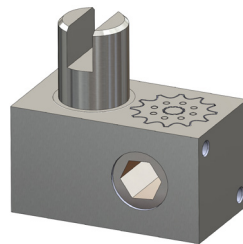
Originally designed for:  
Titgemeyer



M6 GREASE NIPPLE

# WG40

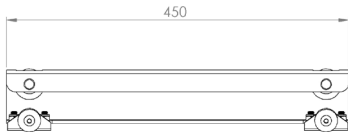
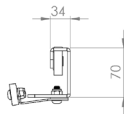
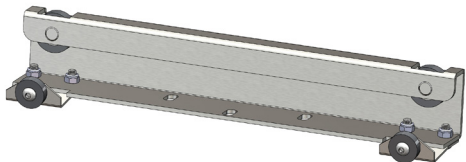
Originally designed for:  
Titgemeyer



# Top Trolley

---

Originally designed for:  
Various

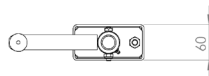
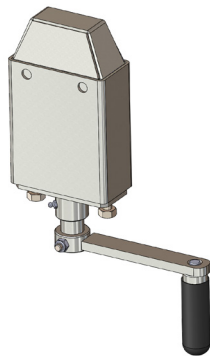
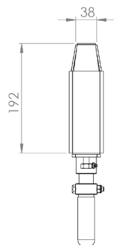
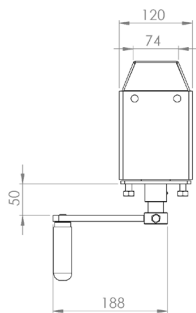


# ACCESSORIES

---

## JU10 Roof Jacking Unit

Additional Part





# ACCESSORIES



Right Hand Front

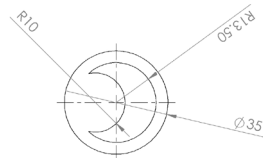
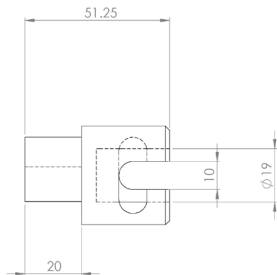


Left Hand Front

## Bottom Cam / Pole Coupler

Additional Part

Tensioner shown is left hand  
front/right hand rear





# LANGVER

Langver Engineering Ltd  
Thirsk Industrial Park, York Road, Thirsk, North Yorkshire, YO7 3AA, England

[info@langver.com](mailto:info@langver.com) | +44 (0) 1845 524938

[www.langver.com](http://www.langver.com)

